



SSE SUMMARY REPORT 2024-2025

Over the past year we have been developing SSE in our school and preparing to launch our new phase of SSE for 24-25.

This is what we did:

- Continued to work on our improvement targets as per our School Improvement Plan.
- Identified the areas within our school context which would benefit from the support of the SSE process.
- Worked with each of our in-house teams to carefully identify needs within our school context.
- Collaborated with these teams to develop their focus, targets, and actions under the lens of the SSE process.
- Completed a full restructure of SSE in Ballymakenny College.

This is what we discovered (as per our 23-24 targets):

What is going well;

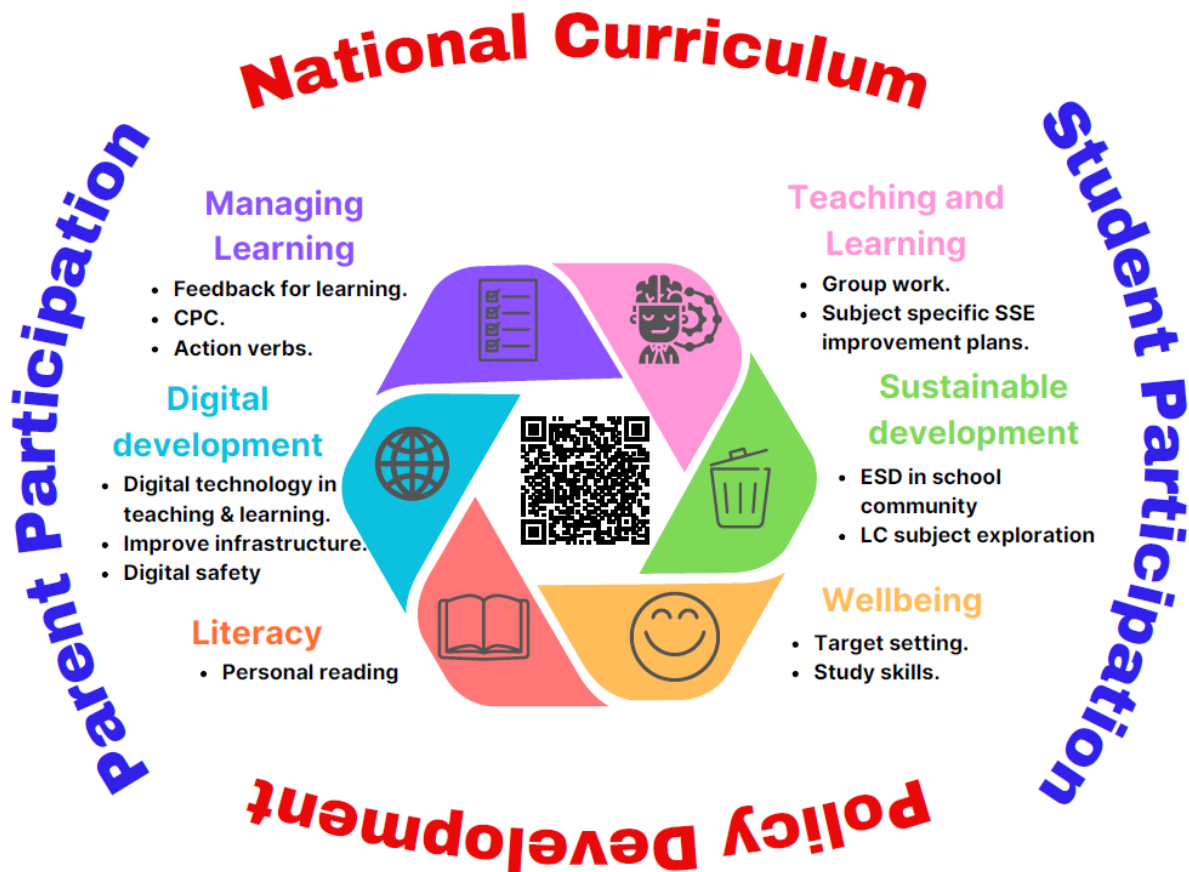
- Students are very competent at reading plot graphs.
- Students did very well in their overall average with action verbs.
- The majority of subject departments hit their keywords target and it has been decided by the SSE team that keywords are embedded in Ballymakenny College.
- DEAR time has been very well received this year.
- Teachers appreciate the SSE reminders on the VS Dashboard and in Treoir announcements.

Room for improvement;

- Students are struggling with rounding numbers. This has been passed onto our maths department.
- While students had a good overall average with action verbs, they are struggling with the words Evaluate, Analyse, Develop and Investigate. These will need further work next year.
- Students did not read some of the questions in the testing correctly. This information has been passed onto our teaching and learning team as an identified need.

- Students do not know how to comment on their results/plot graphs. This focus has been passed onto our Managing Learning team for next year.

This is what we are going to work on:



This is what you, as a parent/guardian can do to help:

- Encourage students to use the plot graphs in their school journal as a way of tracking their progress.
- When checking/signing the school journal, take time to look at their plot graphs for each subject and read their comments under each plot graph.
- Remind students to use their plot graphs and comments to help them prepare for major assessments.
- Ask them what book they are reading during DEAR time in school. Is it one they would recommend to you?
- Encourage them to read in their spare time. Reading articles and novels can dramatically improve literacy skills.
- Discuss themed weeks with them and be aware when different themed weeks are taking place.
- Scan the QR code above or in the school journal to access interactive resources and material on our website in relation to our SSE improvement targets.